



The Riverdale Park *Town Crier*

October 2005

Volume 34, Issue 8

NOAA	1
Council Actions	2
Resolution 2005-OR-4	2
Mayor's Report	3
Worth Buying Into	3
Ward 5 Public Safety Report	4
Katrina and Riverdale Park	4
Hurricane Floods	5
About the FEMA Maps	5
How Deep?	6
Tip for Wind Storms	6
The FEMA Map	7
Calendar	8
Red Cross Family Disaster Planner	9
Farmers' Market Insert	11
Police Update	13
Public Works	13
Recycling and HazMat	13
Police Statistics	13
Tree Care	13
Field of Dreams Improvements	13
Stream Clean-Up	14
Town Talk	15
Field of Rubble	15
Blog Spotter	16
Our Town	16
Community Circles	17
Riverdale Park Day—Not just for kids!	17
Halloween	17
Neighbors Helping Neighbors	17
Fall Back—Sunday, Oct. 30	17
Festival of Lights Planning	17
Riverdale Park Day	18

NOAA Meeting

By Rob Oppenheim

A major new project with significant long-term implications for Riverdale Park is in the final planning stages. The builders of the new NOAA Facility in the M Square Research Park are tentatively scheduled to announce their plans at the next legislative meeting of the mayor and council, Monday, Oct. 3, 8 p.m. Come to the meeting and learn about this important development and ask your questions about possible financial, traffic, and green space impacts on our town. Stay tuned to Town-Announce (see page 15) for last minute developments.

New NOAA Facility To Anchor University's Research Park

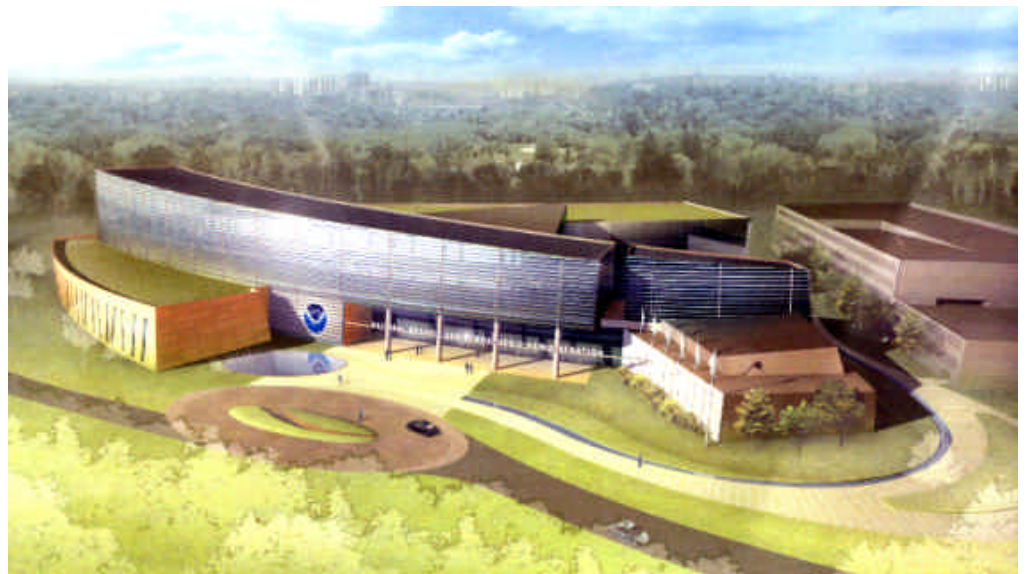
By Patrick J. Prangley

OPUS East, L.L.C., has signed a 13-year lease agreement with the U.S. General Services Administration to develop a 268,762-square-foot office and research complex, most of it within the Town of Riverdale Park.

"The NOAA facility will add to the wealth of advantages and broad range of disciplines available in our university's research park," said University of Maryland President C. D. Mote Jr.

The new National Oceanic and Atmospheric Administration (NOAA) office will be part of the University of Maryland's M Square research park at the rear of the U.S. Department of Agriculture at 4700 River Road. The project straddles the College Park border with Riverdale Park. Since 2003, the town has been working with federal, state, and county officials to lure NOAA back to our community. For many years the NOAA mapping facility operated in an office and warehouse space on Lafayette Avenue.

(Story continued on page 4.)



To:	Bulk Rate U.S. Postage PAID Riverdale Park, MD
	Carrier Route Presort Every Resident and Business Riverdale Park, Md 20737

Council Actions By Colleen Ferguson

September 6, 2005 Legislative Meeting

1. Approved minutes for June 6, 2005, legislative meeting.
2. Approved minutes for August 1, 2005, legislative meeting.
3. Approved No Parking/Standing signs and yellow curbs, northbound side of Taylor Road from Riverdale Road to Oglethorpe Street.
4. Approved recommendation of PY32 street improvement project, 54th Avenue from Riverdale Road to Jefferson Street.
5. Approved application for proposed dance–special events permit, Riverdale Pizza Pub, 6285 Kenilworth Avenue.
6. Introduction of legislation to amend town code governing dance halls, 2005-OR-4, Chapter 25, modification 25§4.
7. Not approved action, OR-3 amendment governing oversight of *Town Crier*.
8. Tabled council endorsement for electoral forum in *Town Crier* and on town-sponsored e-mail list.
9. Approved date Oct 17 8 p.m., public forum on Field of Dreams parking, condition, upkeep, and use of related items.
10. Approved fence variance, 5007 Tuckerman Street.
11. Approved Resolution 2005-R-2, to amend deferred-compensation plan to allow loans from employee accounts.
12. Approved appointment of Ward 1, Ward 1 alternate, Ward 5 and the chair Recreation Board representatives.
13. Work session, Monday, October 31, 2005, will begin at 8:30 p.m.
14. Halloween trick-or-treat, Monday, October 31, 6–8 p.m.
15. Approved Traffic Study Committee recommendation for No Parking signs on Queensbury Road in front of Crescent Cities Center.
16. Approved Hidden Driveway sign, 47th Avenue.
17. Approved No Left Turn sign, 44th Place at Queensbury Road; east of Queensbury No Left Turn sign, west of Queensbury No Right Turn sign.

Resolution 2005-OR-4

A modification to Chapter 25 of the Code of Riverdale Park—Dance Halls

Whereas, the operation of unlicensed dance halls or the operation of licensed dance halls not in compliance with the terms of their approved permits, causes serious public safety problems for the Town.

Therefore, be it resolved that Section 25-4 Penalties be amended as follows: Material to be deleted is struck through. New material is in italics.

§ 25-4 Penalties

~~Violations of this chapter are municipal infractions, the penalty for which shall be one hundred dollars (\$100) for each offense. Each day that a violation of any provision of this chapter continues shall constitute a separate offense.~~

§ 25-4(a) Violations of this chapter are municipal infractions. Each day that a violation of any provision of this chapter continues shall constitute a separate offense.

§ 25-4(b) Operation of an unlicensed dance hall. Any organization found to be operating an unlicensed dance hall shall be subject to a penalty of one thousand dollars (\$1000). The town code enforcement officer, with the assistance of the police department, is authorized and empowered to take such measures as reasonably necessary to effect the closing or otherwise prevent the unlawful continuance or operation of the dance hall. Such measures include:

§25-4(b)(1) To lock or secure the premises or otherwise deny entry thereto;

§25-4(b)(2) To order the premises to be vacated and post therein and on the exterior thereof notices that the dance hall is closed by order of the town and that no person is to enter the premises without permission of the town.

§25-4(c) Noncompliance with the conditions of an issued dance hall permit. If a licensed dance hall is found to be operating not in compliance with all conditions of its permit, it shall be subject to a penalty of one thousand dollars (\$1000).

Town of Riverdale Park

www.ci.riverdale-park.md.us

Town Hall

5008 Queensbury Road
Riverdale Park, MD 20737
301-927-6381

RiverdaleParkMD@comcast.net

Mayor Vernon Archer
240-832-2257
varcher@gmail.com

Council Members

Ward 1 Tracey Toscano 301-927-9022
TraceyRPark@aol.com

Ward 2 Mary Donaldson 301-927-2954
msmarydon@yahoo.com

Ward 3 Novella Sargusingh 301-927-8422
msnovella19@aol.com

Ward 4 Lawrence Taylor 301-474-6868
taylor.lawrence@gmail.com

Ward 5 Gerard Kiernan 301-277-4554
gerardkiernan@earthlink.net

Ward 6 Kenneth Webb 301-523-6202
webbward6@hotmail.com

Patrick J. Prangle, Town Administrator
RiverdaleParkMD@comcast.net

Public Works 301-864-1803
James Houser, Public Works Director
Debbie Murphy, Assistant

Code Enforcement 301-209-1505
CodeRiverdalePk@comcast.net
Colleen M. Ferguson

Police Department 301-927-4343
RivPD@comcast.net
E. Thomas Parker, Chief

Fire Department Emergency 911
Information 301-927-0356

info@riverdalevfd.com
www.riverdalevfd.com
Vincent Harrison, Chief

Town Crier

The Official Newsletter of the
Town of Riverdale Park, Maryland

Editor-in-Chief: Rob Oppenheim
RP.TownCrier@comcast.net
Home: 301-779-1745
Copy Editor: Kate Kelly

Some material contained in the *Town Crier* represents the opinion of the authors and does not necessarily represent the views of the Town of Riverdale Park.

Submission deadline: 15th of each month.

Mayor's Report

Riverdale Park is Worth Buying Into

By Vernon Archer

When I knocked on your doors last spring as I campaigned for office one of the priorities I shared with you was to use town government to market our town for commercial redevelopment. Many of you talked with me about how to do this and helped me develop my thinking. Now, after telling you last month about updates to staffing and management in our town government, I will tell you more about how we are working together to implement my comprehensive marketing plan.

First, we should think of the vacant or underutilized commercial spaces as the **product** that we are marketing, and we should think of our whole town as the **showroom** in which our product is displayed. Good retailers pay attention to both having quality products to sell and a welcoming environment in which to shop. To be successful, Riverdale Park must do the same. Our town has to look good, feel safe, and appeal to our potential business investors.

All parts of town government have key roles to play. Public Works is reassuming responsibility for the appearance of public areas such as the town's pocket parks. Our town already looks better and more inviting. Public Works Director Jim Houser understands that improving our town's public spaces is a key part of our plan to attract new business.

Code Enforcement also plays a key role by making certain that private businesses and residences look good. We have always had zero tolerance for graffiti and overgrown yards. Now we are getting tough on stalled construction projects and abandoned vehicles. We must show pride in our town; we must make the **showroom** look good if we want to attract good customers.

Our town police do a valiant job of keeping our streets safe and maintaining order along the major roads that surround us, and business owners know how important that is to creating a vibrant commercial core. Businesses will only locate into a place where they feel safe and know their own customers will feel safe in turn. Our police not only provide security for us, but in our small town are members of our community too. We hired two new officers and as we continue to get our police force back up to full strength our advantages for business will become even more pronounced.

As we move to get our **showroom** looking good, my economic development team is creating a plan targeting the businesses that we wish to attract. This plan will consist of advertising and promotions, public and media relations, sales, and customer service.

Advertising and promotions

Because we will be going after a relatively small number of businesses, we can concentrate on making very targeted promotions. We will strive to put promotional materials on the desks of key decision makers at desirable companies. Riverdale Park has a lot to offer. Among the things to emphasize will be our strong community and the rapidly expanding customer base at the M Square Enterprise development and along Baltimore Avenue's Eakin Youngentob Development.



Media and public relations

We will put a strong media/public relations policy in place. We must be able to let business investors know that M Square is in Riverdale Park, NOT College Park. We will generate positive news stories about our town in the local and regional press. We will work with local groups and residents to foster events that highlight our strong and growing community.

Sales

As the economic development team identifies good fits between a given site and business, we will task a sales team with making a deal happen. Teams will consist of some combination of myself, council members, town staff, local business leaders, and interested residents. The sales team will make sure that the correct promotions are emphasized, that the land lord/property owners and business interests work through any difficulties, that the business is assisted in satisfying town and county regulations.

Customer Service

The town must provide quality customer service to its commercial residents. The town staff will work with business to make certain that Riverdale Park is as friendly a place for them as we can be while still respecting the needs of residents. When businesses have problems ranging from maintenance, to regulatory compliance, to safety, town staff have the duty to help solve such problems for their customers—businesses as well as residents.

We all share the frustration of too little progress over in many of our commercial properties, but there is a way forward! Riverdale Park Town Government will partner with other government agencies, groups like the Riverdale Park Business Association, landlords, and residents to proactively market our town and get these languishing projects moving. This will not happen overnight, but so long as we remain resolute and keep a smile on our faces, we will succeed.

New NOAA building Continued from page 1

Opus East has arranged a long-term ground lease with the university for the development, which will be the centerpiece of the region's largest research park. The NOAA building will house its Center for Weather and Climate Prediction and part of the National Weather Service and the National Environmental Satellite Data and Information Service. Eventually, about 800 employees will work there, many of them relocating from the current NOAA offices in Camp Springs, Md.

Project owner, developer, and contractor Opus East is collaborating with HOK, the lead design and interior architect, in a design-build partnership. The approach brings together real estate development, design, construction, and building management professionals. James Lee, Opus East president and CEO, says, "Opus is successfully applying its more than 50 years of design-build expertise to help the public sector efficiently and cost-effectively develop world-class facilities."

Opus expects construction to begin next spring, with completion slated for fall 2007. In addition to office space, the project will house a 700-space parking structure and a 500-seat auditorium. The site is a gated complex with security structures that meet government guidelines. Two large woodland preserve areas within the property will provide pleasant outdoor spaces.

Opus East will seek the U.S. Green Building Council's Leadership in Energy and Environmental Design (LEED) Silver Award by incorporating environmentally friendly features, such as energy-efficient design elements for building facades. And its design of storm water and wastewater management systems is especially important, given the proximity to Paint Branch Creek and the Anacostia River. More information about LEED certification is available online: <http://www.usgbc.org/>

Opus East is headquartered in Rockville, Md. It is part of Opus Group, a Minneapolis, Minn., company that is a \$1.4-billion real estate development company. Specializing in office, industrial, institutional, retail, multi-family, and government development, the Opus Group has completed nearly 2250 projects and currently has 24 million square feet in planning or development. Opus employs 1400 staffers in 28 offices in the United States and Canada and contributes 10% of its pretax profits to community organizations. In 2004, the Opus Foundation launched the Opus Prize, an annual \$1million humanitarian award. For information, visit www.opuscorp.com.

We encourage residents and businesses to attend this important announcement given by University of Maryland Vice President John Porcari. Mr. Porcari will provide further information on the new center for weather and climate predictions at our regular scheduled Legislative Meeting Oct. 3, 2005, 8:00 p.m., Town Hall.

Ward 5 and Public Safety Report

By Gerard F. Kiernan

Katrina and Riverdale Park

Our hearts go out to the people of Gulf Coast region, and we must consider how a flood would affect us here in Riverdale Park. The Park Tanglewood apartment complex is in the 500-year floodplain of the Northeast Branch of the Anacostia River (see map page 7). Some part of the Riverdale Towers complex also could be in the 500-year floodplain. I have started to think about developing a personal disaster plan, and you should too.

Everything north of the dike between Oglethorpe Street and Riverdale Road and east of Taylor Road to the river (all the way north to Tuckerman Street) could be affected in a large flood. On the east side of the Northeast Branch, areas between the river and 54th Avenue south of East-West Highway and from the river to Kenilworth Avenue north of East-West Highway could be affected.

If you live in the floodplain, you might want to consider obtaining federal flood insurance. You will notice that all of the town's buildings are in the floodplain. The mayor and council will need to consider what to do to protect the town's records and assets.

One report I found on the Federal Emergency Management Administration's Web site showed the Riverdale Road Bridge. FEMA indicates a 100-year flood would cover the road deck of the bridge. This happened during Hurricane Agnes in June 1972 when about 14 inches of rain fell over broad areas of Maryland. In a 500-year flood, water could top the bridge's guardrails.

Viewing FEMA Floodplain Maps Online

Floodplain maps are actually Flood Insurance Rate Maps that can be viewed on the FEMA web site. Riverdale Park is split between two of them [reprinted in this issue, see page 7].

If you wish to look them up yourself, go to www.fema.gov. Click "Go to main FEMA site". Click FEMA Flood Map Store on the left hand menu. Choose Catalog on the next page (right side). Click "FEMA Issued Flood Maps". Select Maryland, Prince Georges Co., and Prince George's Co. again. Click "Find FEMA Issued Flood Maps!"

Choose map 245208 0025C for the west side of Riverdale Park, or 245208 0030D for the east side. Click the green View button to view the map for free. The map will open in a popup window. For 245208 0025C zoom in on the far right side where the grey area touches the right margin. For 245208 0030D zoom in on the far left side where the grey area touches the left margin.

Hurricane Floods in Riverdale Park?

By Rob Oppenheim

Could it happen here? Well, yes and no. We are fortunate to *not* have the huge Lake Pontchartrain above our town, and we don't live next to a large body of water like the Gulf of Mexico. Yet some of Riverdale Park is in a floodplain, and it's not out of the question for high winds to do considerable damage—with or without a hurricane's flooding. Lots of people can still remember flooding by Hurricane Agnes in June 1972, and many more recall the toppling of the old and stately trees in the municipal park a few years ago in a freak tornado. It's rare, but it has happened. Hurricane Agnes, a category 1 storm, dropped about 12 inches of rain in just a day over much of our region.

Flooding

In the old days, floods were common in some parts of Riverdale Park. *The Riverdale Story: Mansion to Municipality* (p. 116) shows a 1940s flood on what is now Kenilworth Avenue at Riverdale Road. In the late 1950s the U.S. Army Corps of Engineers built the Anacostia River Flood Control and Navigation Project. That system of levees and pumps has protected us pretty well for the past half-century.

Still, parts of Kenilworth Avenue, East-West Highway, and Riverdale Road, as well as many side streets, are in a floodplain, and a really heavy rain could put them under water. These main roads out of town might be impossible to use as evacuation routes. Of course, you should never drive on a flooded street. It takes just 24 inches of water to float your car or truck.

Assessing Your Risk

FloodSafety.com writes: If you live in a 100-year floodplain, there is more than a 1 in 4 chance that you will be flooded during your 30-year mortgage, and you are 27 times more likely to experience a flood than a fire.¹ The U.S. Geological Survey says: "If you live on the designated floodplain, the chances are about 1 in 2 that you will experience a flood during your lifetime."²

The term "100-year floodplain" is being used a lot right now, but it's misleading. USGS cautions we should think of it as a statistical term rather than a chronological prediction: There's a 1-in-100 chance of flooding in any given year. And it doesn't necessarily mean we'll need to wait until 2072 for another Agnes to come to town.

FEMA Maps

Council Member Gerry Kiernan (Ward 5) tracked down Federal Emergency Management Administration (FEMA) flood maps for Riverdale Park, which can be viewed online for free. FEMA calls the maps FIRMs, or Flood Insurance Rate Maps. Riverdale Park is split be-

tween two of them (see the sidebar, page 4, for online viewing instructions). Page 7 shows a compiled, enlarged version of the Riverdale Park FIRMs. Some parts of town are missing because FEMA's maps do not include them.

"It's very difficult to look at [FIRMs] and make a determination if something is in the floodplain," says Curt Sumner, executive director of the American Congress on Surveying and Mapping. "Everybody knows these ... maps are difficult to read and not very accurate." ... Construction changes floodplains so many maps now in use are outdated.

Forbes.com reports that FEMA's outdated maps could be one reason many people in Hurricane Katrina's path never bought flood insurance. If the maps didn't put the house in a floodplain, the owners might not have known the insurance was necessary. About 75% of U.S. flood hazard maps are outdated, Michael Bullock of Intermap Federal Services told a congressional committee in July, "which greatly limits their value in reducing flood losses to lives and property."³

The maps for most of Riverdale Park were last updated in 1987; maps for the northeastern part of town were revised in 1996. FEMA now has a huge project under way to modernize all its maps, but it will take years to complete. The Prince George's County Department of Environmental Resources (PGDER) also maintains flood maps, and it received a FEMA grant to update the county's maps over the next two years.

NEWSFLASH: As we go to press, PGDER tells us that its flood maps are more detailed and accurate than FEMA's. The FEMA map used for this story omits some areas of Riverdale Park. **PGDER has agreed to set up a flood awareness booth at Riverdale Park Day, Oct. 1, 2005, Noon to 5 p.m. Department staff will be on hand to answer questions.** A department staffer says it "will try to bring a few [map] samples to the Riverdale Park Day celebration and have them available for residents to review."

Understanding the Map

So now you want to know where you stand. If you take a look at the map printed in this issue on Page 7, you'll see Zone A areas—grey portions that run alongside the Northeast Branch of the Anacostia River. That's the 100-year floodplain. Some sections are labeled with numbers too (Zone A4 or A7, for example), but the digit can be ignored; it's a code used by insurance companies.

Zone B is the 500-year floodplain that forms a narrow band around Zone A. One FEMA document states

that a 500-year flood on the Northeast Branch would be 16–40 inches deeper than a 100-year flood.

Zone C is the unshaded area. It's officially outside of the floodplain or is considered well protected by flood control structures. Homes in Zone C could still suffer significant damage from localized flooding in a heavy rain or from the failure of a levee or pump. PGDER notes that "25%–30% of all flood loss claims to the National Flood Insurance Program (NFIP) come from properties located in Zone C ... if your home is located in Zone C but close to Zone A, you may wish to consider purchasing flood insurance." The prudent voice might add, if your home is below the top of the levee, or if you have experienced local flooding during spring storms, you might want to consider flood insurance.

There's a toll-free number for NFIP: 800-638-6620. Premiums average \$450 per year depending on where you live and the coverage you choose. In low- to moderate-risk areas, coverage can be purchased for about \$100 a year.⁴

To determine potential water depth more precisely, you need to know your elevation above sea level and compare that with the base flood elevation (BFE) shown on the flood map. BFE is the height above sea level of the surface of a 100-year flood. Note that BFE is not the depth of the floodwater. Your home's survey plat could have the elevation labeled, you can approximate it by looking at a topographic map, or you could hire a surveyor to tell you exactly.

Here is a link to a topographic map of Riverdale Park area: www.tinyurl.com/cqksx. You can use it to get an idea of the elevation of your property, but reading topographic maps is not always easy.

How Deep?

In a 100-year flood, houses and apartments south of East–West Highway within the floodplain could be inundated with 12–24 inches of water; the water could be 5 feet deep in a 500-year flood. Dwellings in the floodplain north of East–West Highway are in more danger. Close to the Northeast Branch, a 100-year flood could bring 5 feet of water, and a 500-year flood might be as much as 8 feet deep. Beware; it takes just 2–6 inches of fast-moving water to knock you off your feet and 2 feet of water to float your car or truck.

You might wonder how floodwater elevations could be 7 feet higher to the north of East–West Highway than just a few hundred feet downstream, a bit south of Riverdale Road Bridge. The answer is in the engineering. Notice that the flood map shows the floodplain spreading out above the bridges. The next time you walk through that area, notice how the levees and bridges form a barrier that limits the amount of water that can flow downstream and how the downstream area has a

large enough capacity to move that much water—assuming there are no blockages. Also notice how the concrete weirs and rocks lower the stream level south of the Riverdale Road Bridge.

Even with maps, it can be difficult to determine whether your property is inside or outside the 100-year floodplain. If your home is close to the boundary, a surveyor would be able to determine the exact elevation to show whether your house is in the floodplain. You also can call PGDER, 301-883-5777 for help in determining if your home is in the floodplain. Call them at 301-883-5874 to ask about flood insurance, flood safety, and flood preparedness. Visit PGDER online: www.tinyurl.com/bd26m or www.goprincegeorgescounty.com/Government/AgencyIndex/DER. The Office of Emergency Management page has links to information about lots of disasters, including hurricanes and flooding.

More Resources

For information about how you can modify your home to protect it from flood damage, go here: www.blueprintforsafety.org/homeowner/flood/flood.html.

For lots of highly recommended information on flood safety, go to www.floodsafety.com.

For more information about how to prepare for a hurricane, go to www.redcross.org and click on "Hurricane Preparedness, A One Stop Resource."

Special thanks to PGDER for reviewing this article for accuracy and completeness.

Tip for Wind Storms

You can protect your trees and make them more resistant to wind damage if you remove diseased or damaged limbs and strategically prune branches so the winds blow through. Town trees are maintained by the Department of Public Works: 301-864-1803.

Fun For Techies

The Riverdale Road Bridge has a "gaging station" where water quality, flow, and depth of the Northeast Branch are measured and transmitted to the USGS. The information is available online in near real-time: www.tinyurl.com/8wp8d. Scroll the window all the way down to see the data. Water depth is labeled *gage height*. Add 12.68 ft to the gage height to get feet above sea level for comparison with flood map data.

¹ FloodSafety.com "Assessing Your Flood Risk," www.tinyurl.com/cu4ua

² U.S. Geological Survey (USGS) Fact Sheet 229-96, <http://pubs.usgs.gov/fs/FS-229-96/>

³ Forbes.com (www.tinyurl.com/9q25c).

⁴ FEMA Flood Insurance, www.fema.gov/nfip/flood.shtm.

Flood Map of Riverdale Park

This map is for educational purposes only.

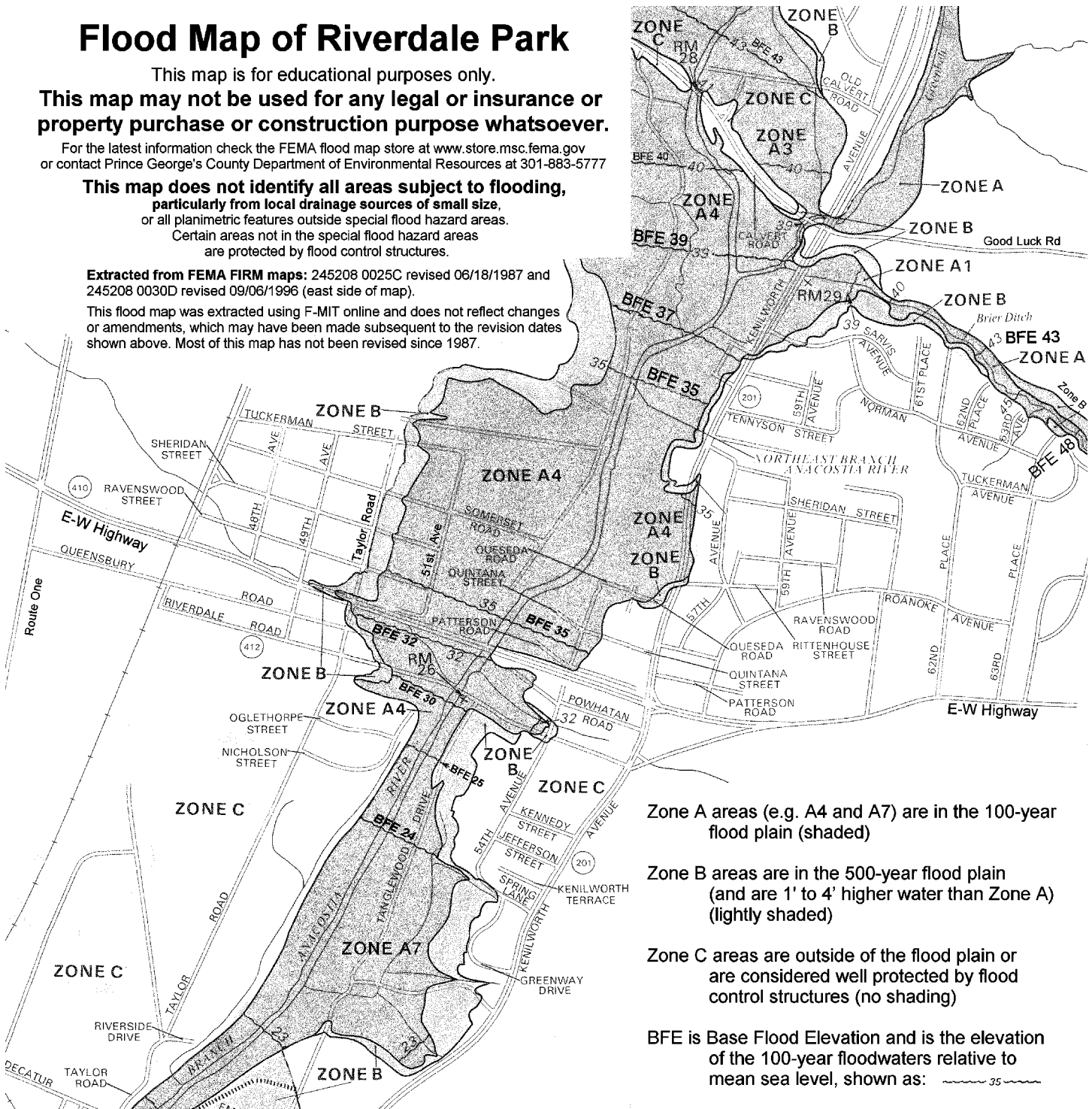
This map may not be used for any legal or insurance or property purchase or construction purpose whatsoever.

For the latest information check the FEMA flood map store at www.store.msc.fema.gov or contact Prince George's County Department of Environmental Resources at 301-883-5777

This map does not identify all areas subject to flooding, particularly from local drainage sources of small size, or all planimetric features outside special flood hazard areas.
 Certain areas not in the special flood hazard areas are protected by flood control structures.

Extracted from FEMA FIRM maps: 245208 0025C revised 06/18/1987 and 245208 0030D revised 09/06/1996 (east side of map).

This flood map was extracted using F-MIT online and does not reflect changes or amendments, which may have been made subsequent to the revision dates shown above. Most of this map has not been revised since 1987.



Zone A areas (e.g. A4 and A7) are in the 100-year flood plain (shaded)

Zone B areas are in the 500-year flood plain (and are 1' to 4' higher water than Zone A) (lightly shaded)

Zone C areas are outside of the flood plain or are considered well protected by flood control structures (no shading)

BFE is Base Flood Elevation and is the elevation of the 100-year floodwaters relative to mean sea level, shown as: $\sim\sim\sim 35 \sim\sim\sim$

Elevation Reference Marks are points with known elevations.
 It can be fun to look for these marks on your next walk.

RM 26, Elevation: 28.69 feet. Description: Brass bolt and copper washer in southeast wing wall of Riverdale Road Bridge over Northeast Branch Anacostia River. This has a circle of paint drawn around it.

RM 28, Elevation 54.07 feet. Description: Brass bolt on north side of Calvert Road in northeast corner of concrete sidewalk of Calvert Road Bridge over Northeast Branch Anacostia River.

RM 29, Elevation 39.05 feet. Description: chiseled square cut on top of east corner of south abutment of Kenilworth Avenue Bridge over Brier Ditch.

All elevations are to the National Geodetic Vertical Datum of 1929 (NGVD 29) standard.

October 2005

Sunday	Monday	Tuesday	Wednesday	Thursday	Friday	Saturday
<p>To be listed in the Calendar or in Community Circles send an e-mail to RP.TownCrier@comcast.net. For repeating events please specify a repetition rule and a stop date.</p>						<p>1</p> <p>9 am - 5 pm Trash, oil, paper drop off, PW¹</p> <p>Noon - 5pm Riverdale Park Day³</p>
<p>2</p>	<p>3</p> <p>Regular trash & yard waste - A</p> <p>8:00 pm Legislative Meeting</p>	<p>4</p> <p>Regular trash & yard waste - B</p> <p>7:00 pm Traffic</p> <p>8:00 pm ComCom</p>	<p>5</p> <p>County Recycling</p> <p>7:30 pm M-UTC¹</p>	<p>6</p> <p>Regular, heavy & metal² pickup - A</p> <p>3 pm - 7 pm Farmers Market Town Center</p> <p>6:30 pm - 8:30 Conflict Resol.^a</p>	<p>7</p> <p>Regular, heavy & metal² pickup - B</p> <p>2:45 pm Girl Scouts</p> <p>Solar Village on the Mall^a</p>	<p>8</p> <p>9 am - 5 pm Trash, oil, paper drop off, PW¹</p>
<p>9</p>	<p>10</p> <p>Regular trash & yard waste - A</p> <p>Columbus Day but offices & PW¹ open</p> <p>7 pm Boy Scouts</p> <p>7:30 Rec Board</p> <p>Solar Village on the Mall^a</p>	<p>11</p> <p>Regular trash & yard waste - B</p> <p>7:30 pm Madison Hill Assoc</p>	<p>12</p> <p>County Recycling</p>	<p>13</p> <p>Regular, heavy & metal² pickup - A</p> <p>3 pm - 7 pm Farmers Market</p> <p>6:30 pm - 8:30 Conflict Resol.^a</p>	<p>14</p> <p>Regular, heavy & metal² pickup - B</p> <p>2:45 pm Girl Scouts</p> <p>Solar Village on the Mall^a</p>	<p>15</p> <p>9am - Noon Stream Clean-up³</p> <p>9 am - 5 pm Trash, oil, paper drop off, PW¹</p>
<p>16</p> <p>Solar Village</p>	<p>17</p> <p>Regular trash & yard waste - A</p> <p>8 pm Field Of Dreams meeting</p> <p>Town Crier Deadline</p>	<p>18</p> <p>Regular trash & yard waste - B</p> <p>7:30 pm HLN¹</p> <p>8:00 pm Public Safety</p>	<p>19</p> <p>County Recycling</p> <p>7:30 pm Beautification</p>	<p>20</p> <p>Regular, heavy & metal² pickup - A</p> <p>3 pm - 7 pm Farmers Market Town Center</p> <p>6:30 pm - 8:30 Conflict Resol.^a</p>	<p>21</p> <p>Regular, heavy & metal² pickup - B</p> <p>2:45 pm Girl Scouts</p>	<p>22</p> <p>9 am - 5 pm Trash, oil, paper drop off, PW¹</p>
<p>23</p>	<p>24</p> <p>Regular trash & yard waste - A</p>	<p>25</p> <p>Regular trash & yard waste - B</p>	<p>26</p> <p>7:00 pm Lions Club 7pm</p> <p>County Recycling</p>	<p>27</p> <p>Regular, heavy & metal² pickup - A</p> <p>3 pm - 7 pm Farmers Market Town Center</p> <p>6:30 pm - 8:30 Conflict Resol.^a</p>	<p>28</p> <p>Regular, heavy & metal² pickup - B</p> <p>2:45 pm Girl Scouts</p>	<p>29</p> <p>9 am - 5 pm Trash, oil, paper drop off, PW¹</p>
<p>30</p> <p>Daylight Savings Time Ends. Set clocks back 1 hr</p>	<p>31</p> <p>Regular trash & yard waste - A</p> <p>Halloween</p> <p>6-8 Trick n Treat</p> <p>8:30 pm Work Session</p>					

^a See September Crier

¹ Abbreviations: PW, Public Works; HLN, PG Home Learning Network;
M-UTC, Mixed-Use Town Center Zoning Review

² Regular trash, heavy trash, and metal recycling.

³ See article for more information.

All activities at Town Hall, unless otherwise noted.



HURRICANE EVACUATION CHECKLIST

TAKE ACTION NOW

- Monitor media reports.** Watch TV, listen to AM/FM or NOAA weather radio and check the Internet often for official news. **Evacuate when advised** to do so.

Family Communications Plan Steps:

- Make a plan and prepare to evacuate.** Plan your evacuation route by using maps and identifying alternative routes. Pets should not be left behind, but understand that only service animals are permitted in shelters. Plan how you will care for your pets and bring extra food, water and supplies for them.
- Develop a family communication plan** by designating an out-of-town contact that you can call. Ask them to contact other people who care about you, to let them know your status. Write contact information including name, home, work and cell phone numbers and e-mail address.

Contact information to provide to your out-of-town contact.

Name:	Name:
Phone #:	Phone #:
Email:	Email:
Name:	Name:
Phone #:	Phone #:
Email:	Email:
Name:	Name:
Phone #:	Phone #:
Email:	Email:

Assemble a Disaster Supplies Kit Including the Following Items:

- | | |
|--|--|
| <input type="checkbox"/> Non-persihable or canned Food | <i>Special items for:</i> |
| <input type="checkbox"/> Can opener (non-electric) | <input type="checkbox"/> Infants |
| <input type="checkbox"/> Bottled water | <input type="checkbox"/> Elderly |
| <input type="checkbox"/> Clothing | <input type="checkbox"/> People with disabilities |
| <input type="checkbox"/> Rainwear | |
| <input type="checkbox"/> Bedding | <i>Important Documents</i> |
| <input type="checkbox"/> Sleeping bags | <i>(store in a waterproof container):</i> |
| <input type="checkbox"/> Pillows | <input type="checkbox"/> Driver's license |
| <input type="checkbox"/> Battery-operated radio | <input type="checkbox"/> Social Security card |
| <input type="checkbox"/> Flashlight | <input type="checkbox"/> Proof of residence |
| <input type="checkbox"/> Extra batteries | <input type="checkbox"/> Insurance policies |
| <input type="checkbox"/> Prescriptions and medications | <input type="checkbox"/> Tax records |
| <input type="checkbox"/> First aid kit | <input type="checkbox"/> Birth and marriage certificates |
| <input type="checkbox"/> Car keys | <input type="checkbox"/> Deeds |
| <input type="checkbox"/> Maps | <input type="checkbox"/> Wills |

Remember to make a supplies kit for pets with water, food (with manual can opener), collars with identification tag, carrier or harness, sturdy leash, medication, name and number of veterinarian, cat litter pan and scooper, pet beds and toys.

Prepare Your Home:

- Bring inside: lawn furniture, trash cans, hanging plants, outdoor decorations or ornaments, or anything else that can be carried by the wind.
- Close windows and doors, then close hurricane shutters or install pre-cut plywood. *Note: Tape does not prevent windows from breaking, so taping windows is not recommended.*

Evacuate If Necessary:

- If advised to evacuate, do so immediately. Follow the advice of authorities on which routes to take, which evacuation shelters to seek, and other important directions.
- Identify ahead of time where to go if told to evacuate. Learn the best evacuation routes to take. Get the telephone numbers of places you may go, as well as a road map in case you need to take alternative or unfamiliar routes if major roads are impassable.
- If time allows, call or e-mail your out-of-town contact to let them know where you are going and when you expect to get there. Leave a note telling others when you left and where you are going. Check with neighbors who may need a ride or other assistance.
- If you live in the affected area, call the toll-free Red Cross hotline: 1-866-GET-INFO (866-438-4636) for the nearest Red Cross emergency shelter. Or make arrangements to stay inland at a hotel or with friends or relatives until the storm has passed.

Take Precautions:

- Listen to local TV, radio, or NOAA Weather Radio to be aware of watches and warnings.
- Be aware that the calm "eye" is deceptive; the storm is not over. The worst part of the storm will happen once the eye passes over and the winds blow from the opposite direction. Trees, shrubs, buildings, and other objects broken by the first winds can be destroyed by the second winds.

Tornadoes can happen during a hurricane and after it passes over.

- Be alert to weather conditions as they can change rapidly. Look for large hail and listen for the sound of an approaching tornado – many say approaching tornadoes sound like a freight train.
- Pick a safe place in your home where family members and pets can gather if a tornado occurs.
- Remain indoors, in the center of your home, in an interior closet, bathroom or hallway on the lowest floor, and away from all windows.
- Know the community's warning system. Many use sirens.

Flooding can begin well before a hurricane nears land.

- Stay away from floodwaters. If you come upon a flooded road, turn around and go another way. If you are caught on a flooded road and waters are rising rapidly around you, get out of the car quickly and move to higher ground. The floodwaters may still be rising, and the car could be swept away at any moment.
- Never attempt to drive through water on a road. Water can be deeper than it appears, and water levels can rise very quickly.
- Most cars can be swept away by less than two feet of moving water. Many hurricane deaths are caused by people attempting to drive through floodwaters.
- Floodwaters can erode roadways, and a missing section of road – even a missing bridge – will not be visible with water running over the area.
- Avoid walking through floodwaters; two inches of moving water can sweep most people off their feet.



Farmer's Market

At Riverdale Park Town Center



May and June: Early crops, bedding plants, strawberries, flowers, baked goods, eggs, jams, baskets, and honey.

July, August, and September: Tomatoes, corn potatoes, watermelon, cantaloupe, peas, cabbage, turnips, assorted berries, baked goods, eggs, baskets, honey, and peaches.

September and October: Late summer crops plus apples, pumpkins, peppers, gourds, cider, mums, baked goods, and eggs.

May 12 - November 17, 2005

Every Thursday 3-7 pm



**Town Center is located at
Queensbury Road and
the MARC Station**

**For more information, call Pat
Gladding at (301) 927-1362 or
the Riverdale Park Town
Office (301) 927-6381**

WIC coupons are accepted

Farmer's Market Insert -no electronic copy
(Spanish)

Police Staffing Update

Since June, when the Town Crier ran an article on police staffing, our department has hired one new officer, and one has left, so we have the same number of patrol officers (12) on the books. Two of those officers currently are in training, however, so we have an effective force of 10 officers on patrol. The town is looking to hire more officers. Mayor Archer addressed this issue in the September issue's Mayor's Report (page 3).

The department now has 22 employees: Two new dispatchers were hired and are in training, and a third is being sought to fill a part-time position. Hiring dispatchers is important—when that office is short staffed, officers must fill in, reducing the time they can spend on patrol.

The officers on the command staff are Chief Parker, two lieutenants, and a detective. All fill in as needed on patrol and dispatch. The remaining two positions are administrative.

Public Works

Leaf season is fast approaching. Collections begin Nov. 1 and will continue until the end of December. Please remember to place your leaves by the curb—not on the sidewalk or in the street. The collection equipment cannot pick up leaves piled in front of cars. Leaves that are ready for pickup **before Nov. 1** should be **bagged** and set out on yard waste collection days. The monthly calendar lists refuse collection schedules.

Recycling and Hazardous Materials

Prince Georges County collects recyclable materials from Riverdale Park residents each Wednesday. Problems, complaints, or requests for containers should be directed to 301-952-7630.

Automobile batteries may be set out for pickup on heavy trash pickup days (Thr/Fri) for recycling. Please do not place batteries in regular household trashcans.

Residents may dispose of **antifreeze, paint, and other hazardous household materials** each Sunday (except holidays), 7:30 a.m. to 4:00 p.m., at the Brown Station Landfill, 11611 White House Road, Upper Marlboro. Drop-offs must be made in noncommercial vehicles. Call 301-883-5045 for information.

Tree Care

It is a state violation for residents to remove or trim town trees. Please call the Department of Public Works (301-864-1803) to report problems. There are two licensed tree care experts on staff. If you see power lines in a tree, call Pepco (202-872-3432) or dial 911. Never go near a downed power line.

Police Statistics

The statistics compiled for the first eight months of this year show that some of the “Disturbing 2005 Trends” discussed in the June issue (page 6) have continued. Serious theft has doubled, but violent acts have continued on a welcome downward trend. The combination of a rising crime rate and the reduction in available staff has taken time away from routine patrols and traffic stops.

Year-to-Date (January through August) Compared with same period, 2004

Classification	Jan-Aug 2004	Jan-Aug 2005	% Difference	Ratio
Murder	2	1	-50 %	0.5
Rape	0	1	-	-
Assault	31	29	-6 %	0.9
Subtotal	33	31	-6 %	0.9
Robbery (Citizen)	15	46	+207 %	3.1
Robbery (Commercial)	7	12	+71 %	1.7
Robbery (Carjacking)	3	7	+133 %	2.3
Subtotal	25	65	+160 %	2.6
Burglary (Residential)	11	13	+18 %	1.2
Burglary(Commercial)	10	15	+50 %	1.5
Burglary (Storehouse)	1	3	(small sample)	
Subtotal	22	31	+41 %	1.4
Stolen Vehicle	42	83	+98 %	2.0
Total, Robbery + Burglary + Stolen Vehicle	89	179	+101 %	2.0
Traffic Stops	967	733	-24 %	0.8
Traffic Citations	765	650	-15 %	0.8
Parking Citations	1,447	714	-51 %	0.5
Subtotal	3,179	2,097	-34 %	0.7
Arrests	117	143	+22 %	1.2
Routine Patrols	3,939	2,071	-47 %	0.5
Calls for Service	10,509	7,902	-25 %	0.8

Field of Dreams Improvements

Everyone is invited to participate in an open forum at Town Hall, **Monday, Oct. 17, 8 p.m.**, to discuss the Field of Dreams, the town's ball field at the intersection of Tuckerman Street and Lafayette Avenue. Agenda items include restroom facilities, trash management, parking, and physical improvements along the park's perimeters. If you are concerned about these or other issues relating to the field please come out and participate with your neighbors. Call Town Hall with questions or, better yet, post your thoughts and questions on TownTalk.

Stream Clean-up

Help clean up the Northeast Branch of
the Anacostia River.

This urban stream runs through residential
Prince George's County before joining the
Anacostia River, and it needs your help to stay
healthy and beautiful.

Saturday, October 15, 2005
9:00 a.m.-12:00 p.m.

Meet at the bridge on Riverdale Road

Gloves and bags will be provided

For more information or directions to the site, contact
the Anacostia Watershed Society at: (301) 699-6204



JACK B. JOHNSON
County Executive



Donna M.P. Wilson, Esq.
Director



The TownTalk e-mail list is where the action is and Town-Announce lets you know about upcoming meetings and agendas. That's right, you can know what is going to be discussed BEFORE the meeting takes place.



Amazing. The ComTalk list recounts discussions from the town's Communications Committee and is a great place to complain about the *Town Crier*. TownTalk lets citizens sound off about local issues and clue each other in about what's happening and what should be happening. To sign up go here: www.tinyurl.com/dn6tj.

Here's a summary of recent discussions:

- The "Field of Rubble" at the corner of Route One and East-West Highway was a hot topic, and a last-minute special presentation at Town Hall was announced. See article below.
- Water your trees! We have a serious drought, and trees and bushes are dying. Drip irrigation bags (e.g. Treegator®) were recommended as a time saving device. They hold gallons of water that slowly drip so it absorbs into the ground without run-off, \$16-\$20.
- Tracey Toscano (Ward 1 Council) purchased a house in University Park and may be moving soon (and may not). If her seat comes open it will be filled in a special election. So far, four people have indicated interest in running: Roland Walker, Maureen Farrington, Bruce Wernek, and Jack Jones.
- ComTalk (with some spillover to TownTalk) discussed how these E-mail lists might best be used in election seasons. Should candidates be allowed to use the lists? Should that use be limited in some way? Should it be wide open and uncensored? Should a separate list be created for campaigning? All unsettled questions.

Field of Rubble

By Rob Oppenheim

(Adapted from TownTalk, Sept. 7, 2005)

Joseph Caputo is the man behind the Field of Rubble at the corner of Route One and East-West Highway. Mr. Caputo is chief executive officer of Potomac Development Corporation (PDC). Mayor Vernon Archer invited him to attend the legislative meeting Tuesday, Sept. 6, to discuss the project's status. Here's a summary:

Mr. Caputo made a brief statement ("We hear you, we understand, we would be upset too if it were in our neighborhood."). He explained how development of the site was delayed when Brooks Pharmacy bought most of

the Eckerd Drug store chain and then decided to dramatically cut back on opening new stores because of cash flow and profitability issues. Brooks canceled three contracts with PDC for new locations—including this one. The curb cut problems were not the reason Eckerd backed out.

Mr. Caputo took questions and listened to many passionate yet mostly civil audience comments. Several people complained that the rubble pile adds insult to injury; they are embarrassed to live in "Rubbedale Park." PDC officers expressed surprise at how upset people were and promised to investigate possibilities to improve the appearance and respond in a week or two. Audience suggestions included covering the pile with dirt, seeding it, and removing the fence or hiding the lot with a hedge. Mr. Caputo explained that the lot has an access pit area that must remain fenced until other work is completed, but that PDC would investigate fencing a smaller area. PDC promised to continue attending our monthly meetings until the issue is settled and promised to reimburse the town if Public Works does any repairs or cleanup to the property.

PDC's 6-month plan calls for pulverizing the rubble and using it as fill after the adjacent church building is torn down this winter. PDC has two prospective tenants, which it declined to name until negotiations are completed. One is a financial institution (when pressed, Mr. Caputo used the word "bank"); the other is a drug store. One audience member expressed disappointment in those prospective tenants and suggested PDC try to lease the space to Trader Joe's food stores.

Mr. Caputo passed out business cards and encouraged attendees to have citizens and prospective tenants contact him: Joseph A. Caputo, Chief Executive Officer, Potomac Development Corporation, 13208 Lantern Hollow Drive, North Potomac, MD 20878; 301-947-6901 (office), 703-850-4499 (cell), 301-947-8189 (fax); E-mail: josephacaputo@aol.com.

Update—September 23

Things are looking better. PDC installed a fabric screen on the fence, crushed and leveled the pile of rubble, brought in fill dirt, and is hydro seeding. Once the grass takes root, PDC says it will reduce the fencing. The company is still negotiating with potential tenants but hopes to have an announcement soon. Company representatives plan to attend the Oct. 3 legislative meeting to keep us posted. There is still some junk sitting outside the fence that needs to be picked up, but Mr. Caputo is to be applauded for listening and following through on his word.

Blog Spotter

By Rob Oppenheim

Here is a smattering of what the Web loggers are writing about Riverdale Park. Check their offerings for some enjoyable—and often surprising—reading. Links to all of them, and a few more, are available here: www.tinyurl.com/csxuk.

The RiverdaleParkette (Maureen Farrington) writes with great humor about

- Famous people in Riverdale Park
- Her mysterious absence: “The riverdaleparkette is allowed to post again now that her period of mourning for the bookshop is through. Or maybe she was in a Tijuana jail for two weeks. Her attorneys advise her to neither confirm nor deny any rumors ... about an underground gerbil-fighting ring.”
- The Riverdale Park perpetual motion machine of sassiness!

The RiverdaleParkReader (Audrey Brag) writes about

- Gerald King’s art exhibition, complete with beautiful pictures online
- The Riverdale Business Association (RBA) Route 1 project and how it improved the big planter boxes
- Joseph Caputo’s meetings with the town and RBA about the “Field of Rubble” (see article page 15)

RiverdalePark.blogspot (David Hiles) writes about

- How to go broke saving money, “Pavement preservation is a planned system that keeps the street inventory in better shape at a lower lifetime cost than what we get under the ‘fixing the worst first’ method.”
- Field of Rubble: A real way to deal with this! A discussion of tax alternatives to discourage vacant property
- Soccer, soccer, and more soccer; David does love this game

The Riverdale Observer (Jack Jones) writes about

- “Who’s not paying their fair share?” numbers crunched for how much letting land sit vacant costs the rest of us
- Alternative political thinking
- Dutch football and home schoolers

The Green Dragon Inn (Andrew Farrington)...

- Waxes poetically on the once tardy bells of the Town Center Clock.

Our Town

By Marita Novicky

Mary Courtney was a young bride when she and her husband Steve moved to Riverdale in the 1950’s. Mrs. Courtney was from Frederick, Md.; Mr. Courtney was a Washington, D.C., native. The couple raised three sons, Roy, Steve Jr., and Paul, in their home on Somerset Road. Mr. Courtney worked as a salesman for the Macke Company, a vending-machine supplier, and Mrs. Courtney stayed home to raise their family. Mr. Courtney passed away in 1992. Mrs. Courtney always loved to knit and crochet, and she is especially fond of cats. She lived on Somerset for 49 years, but sold the house after suffering a stroke last Mother’s Day. She now lives in Waldorf, close to sons Roy and Steve. A new family has moved into the Courtney’s old house, and they are busily updating the property, making it their own. Mrs. Courtney would love to hear from her neighbors; send a note or a card to Mrs. Mary Courtney, Waldorf Healthcare Center, 4140 Washington Road, Waldorf, MD 20602.

Those of us who live on the lower blocks of Sheridan Street could not help notice the great number of cars visiting one of our neighbors over a two-week period at the end of August. Lube Biru and his wife Yesarge Lemma, who moved here in 1987, recently lost a family member. Mr. Biru’s uncle, Sisai Ibssa, died Aug. 20. He had left the Birus’ home on Sheridan Street that morning. He had been staying with the Birus while he was recuperating from surgery. Later the same day, after returning to his apartment in Washington, he suffered a heart attack. Hundreds of local Ethiopians came to pay their respects and sit with the Biru family over the next 10 days. The Ethiopian tradition is to visit, bring food, and support the family during the 40 days after the passing of a family member. That period is shortened here in the U.S. because of the busy lives Americans lead. Mr. Ibssa was a well-known leader of in the United States of people from Oromio. The Oromo ethnic group represents about 60 percent of the Ethiopian population—a majority that does not have the vote in Ethiopia. He was a founder of the Union of Oromo Students in North America.

Our Town is a collection of notes and stories about Riverdale Park residents written by Marita Novicky, who lives on Sheridan Street in a house that once was known as Three Oaks and now is affectionately called the Riverdale Retreat. If you have a story you would like to share about one of our neighbors in Riverdale Park, you may send it to novickym@hotmail.com.

Community Circles

By Rob Oppenheim

Riverdale Park Day—Not just for kids!

In addition to all the family fun, there will be some serious safety education too. The Prince George's County Department of Environmental Resources on Flood Awareness and Emergency Preparedness along with our Police Department and Fire Department will staff education booths. Residents can see accurate flood zone maps (see page 5) and talk to someone knowledgeable about flood protection and other issues. The fire department will celebrate Fire Prevention Week at Riverdale Park Day with a helicopter, fire trucks, a jaws-of-life demo on a real car, "Stop Drop and Roll" drills, U-hose-it fake house fire, and more. The police department will have emergency preparedness information and will have a piñata and other fun for kids.

There will be raffles and tulip, hyacinths, daffodils, and crocus bulbs for sale, along with books and glassware and plenty of delicious great food—hot dogs, hamburgers, soft drinks, cider, cookies, popcorn, and cotton candy.

There will be pony rides, a petting farm, antique cotton candy and popcorn machines, and a Hi Striker. Sack, three-legged, and egg-on-spoon races, games, crafts, music, even a horse race. Old-time photos will be taken between 12:30 and 2:00 p.m. Rumor has it a clown could appear to pull the noses off of the bad kids.

Riverdale Park Day, Oct. 1, 2005, Noon to 5 p.m., on the grounds of the Riversdale Mansion, 4811 Riverdale Road. Call or write Doris Pullman, 301-927-6992, rhteaLady@aol.com

Halloween

Doing something special for Halloween at your house? Use TownTalk to announce it (see page 15). Rumor has it that some block parties are in the works where neighbors are getting together to throw an especially big bash in the yard of one home on the block, complete with smoke machines, caldrons, candy, and witches! (OK, we're *starting* the rumor. But what the heck, it might catch on!)

Trick-or-Treating in Riverdale Park is 6–8 p.m., Monday Oct. 31. If you prefer to not have little goblins begging at your door, please turn off your porch and outside lights. And **kids, please do not approach dark houses!** Ever. The mayor and council's work session will start at 8:30 p.m. that night to allow everyone time to finish eating candy and to get out of costume.

Check www.pgparcs.com/things/calendar.html for lots of Halloween parties and events. Here is a sample:

Scary Mask Making—Saturday, Oct. 29, 4–6 p.m. Reservations required by Oct. 22. Ages 10–17. Fee: \$3; nonresidents \$5; free for Xtreme Teen members.

Bladensburg Community Center, 4500 57th Avenue, Bladensburg. Information: 301-277-2124.

Flight Night—Saturday, Oct. 29, 7–9 p.m.

Come to the area's largest family Halloween party. Wear your costume for an evening of arts and crafts, haunted hayrides, costume contests, and spooky fun. Tickets \$4. College Park Aviation Museum, 1985 Cpl. Frank Scott Drive, College Park. Information: 301-864-6029.

Scared in the Bayou—Saturday, Oct. 29, 7–10 p.m.

The grounds of Beltsville Community Center are haunted. Goat Man and other ghoulies have been spotted, and they've been looking for the staff person who disappeared a while back. Scared yet? You will be. Ages 8 & up, but **10 & under must be accompanied by an adult**. Fee \$3; nonresident \$4. Beltsville Community Center, 3900 Sellman Road, Beltsville. Information: 301-937-6613.

Costumes On Ice—Monday, Oct. 31, 7–9 p.m.

Live DJ, treats, and the world-famous Costume Parade on Ice. If you arrive in full costume you get free admission—but not skate rental, that's the regular price. All ages welcome. Herbert Wells Ice Rink, 5211 Paint Branch Parkway, College Park. Information: 301-277-3717.

Neighbors Helping Neighbors

Neighbors Helping Neighbors provide volunteers for the small jobs that can make a big difference. NHN has no rules or regulations for requests or for membership. If they can help, they do. If the help is beyond their means, they refer the request to another organization. To help NHN or to request help for yourself or others, call Audrey Bragg, 301-277-7393, or send an e-mail to Abagg7393@aol.com.

Fall Back—Sunday, Oct. 30

Get up at 2 a.m. Sunday morning to set your clocks back to 1 a.m., then hit the sack to enjoy the extra hour. Or do it the old-fashioned way and remember to reset everything before turning in Saturday night. While you're about it, **check all your smoke and carbon monoxide detector batteries**. That way, you'll enjoy your hard-earned extra hour, and you needn't fret when the sun sets at 5:10 p.m.

Festival of Lights Planning

The Recreation Board will meet Monday, Oct. 10, 7:30 p.m., to plan this year's festival. The Recreation Board is taking on the event, which was hosted in the past by the Riverdale Book Store. The location and other details are still being decided. Call or write Chair Doris Pullman, 301-927-6992, rhteaLady@aol.com.

Riverdale Park Day

Saturday, October 1, 2005
12 Noon to 5 PM
Riversdale Mansion Grounds

Celebrate
Riverdale Park's
85th Anniversary!



Food, Music, Games,
Rides, and Crafts for the
Whole Family.

Enjoy Festivities
Typical of the 1920s ...



SACK RACES



PIE EATING
CONTESTS

OLD TIME
PHOTOS

...When Riverdale Park
Was Founded!